



EST. 1969

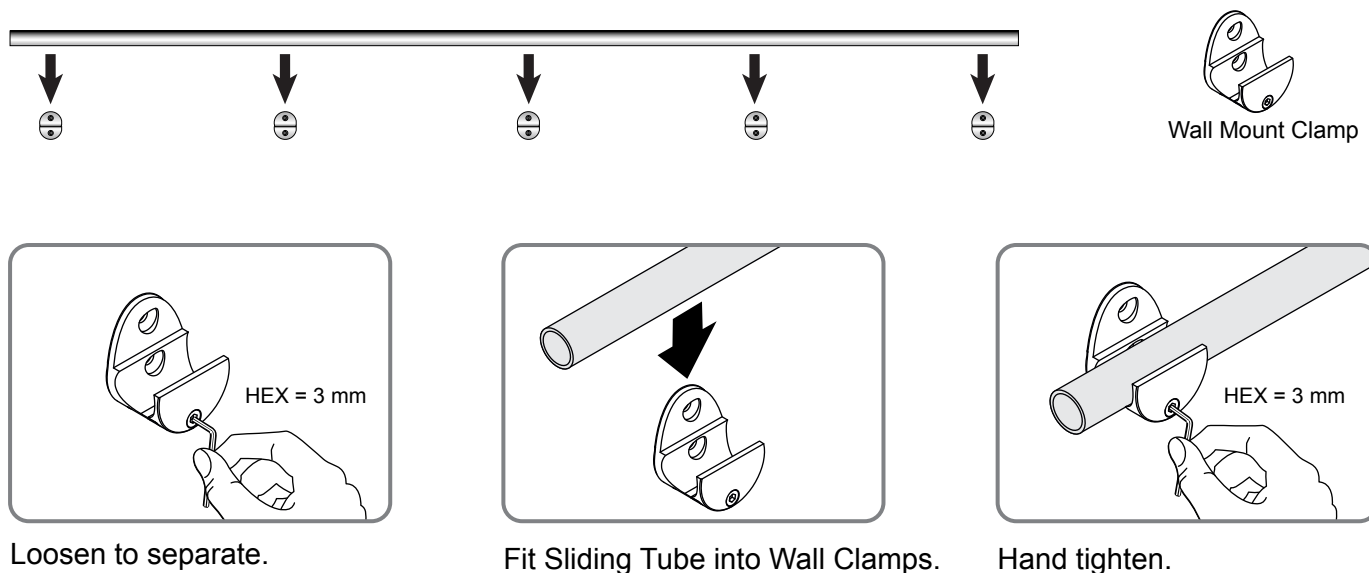
FORSYTH

GLAZING

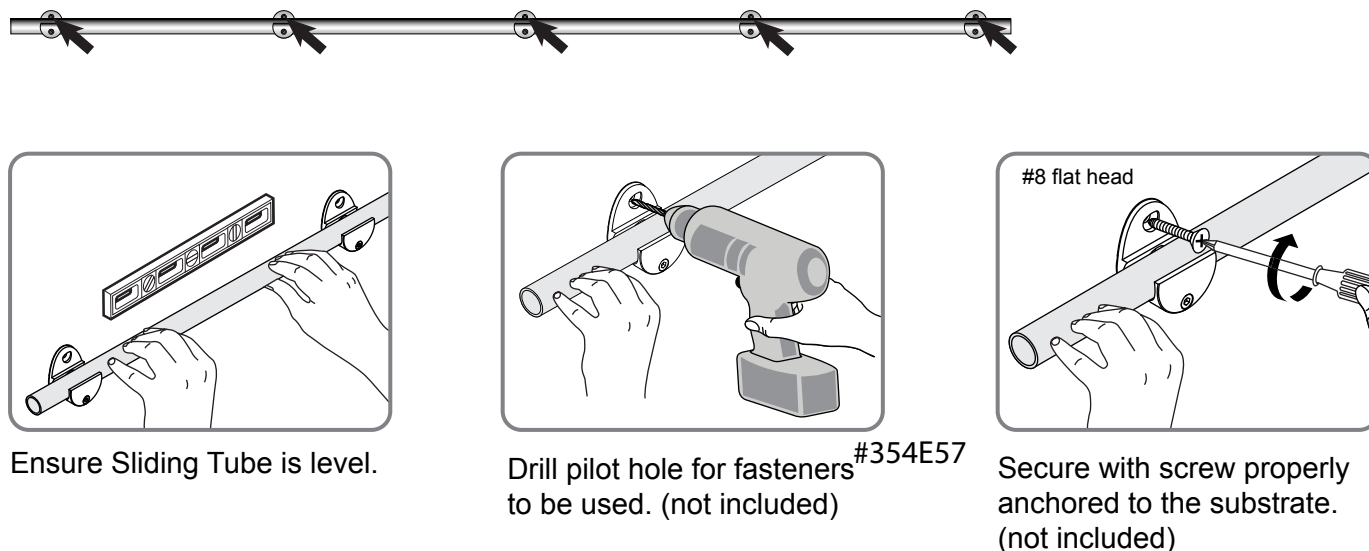
INSTALL HARDWARE: WALL MOUNT

1. Attach Wall Mount Clamps to Sliding Tube

Cut Sliding Tube to length. Prepare on a flat surface to keep Wall Mount Clamps aligned. Place Clamps in correct position. Refer to hole location details for correct Clamp spacing. Hand tighten to hold Sliding Tube.

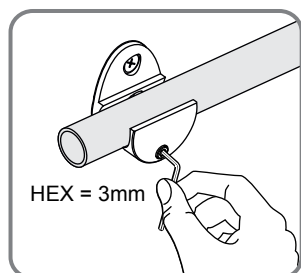
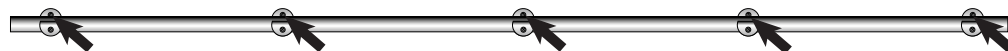


2. Position Level to Wall

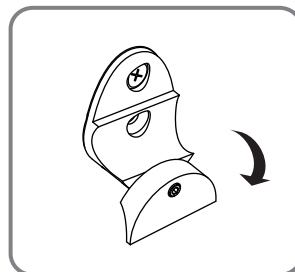
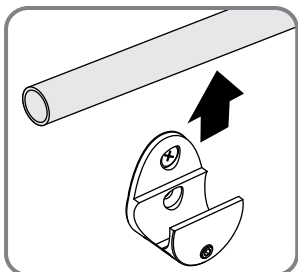


INSTALL HARDWARE: WALL MOUNT (CONTINUED)

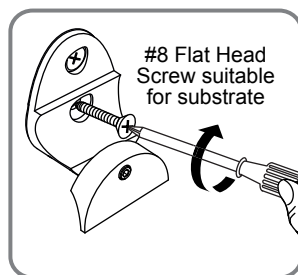
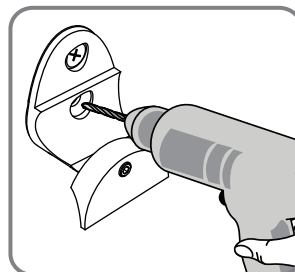
3. Mount the Wall Mount Clamps



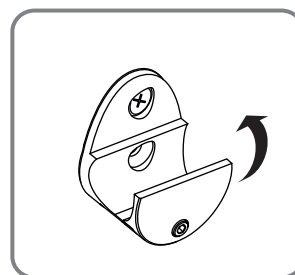
Loosen Wall Clamp and remove Sliding Tube.



Move bottom part of Clamp down to drill pilot hole.

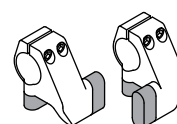
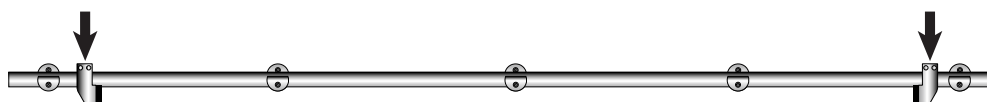


Secure to with fastener (not included).

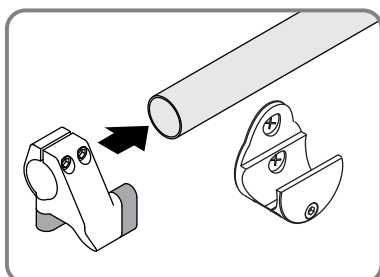


Return bottom part of Clamp to upright position.

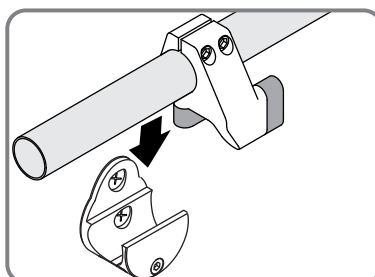
4. Install Left and Right Door Stops



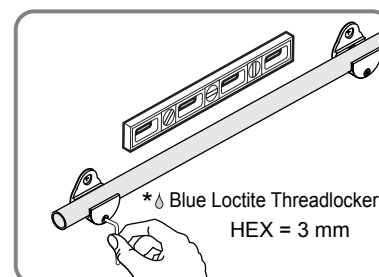
Left and Right Door Stops



Slide left and right Door Stops onto Sliding Tube.



Ensure each Stop clears outboard Clamp when placing Tube.



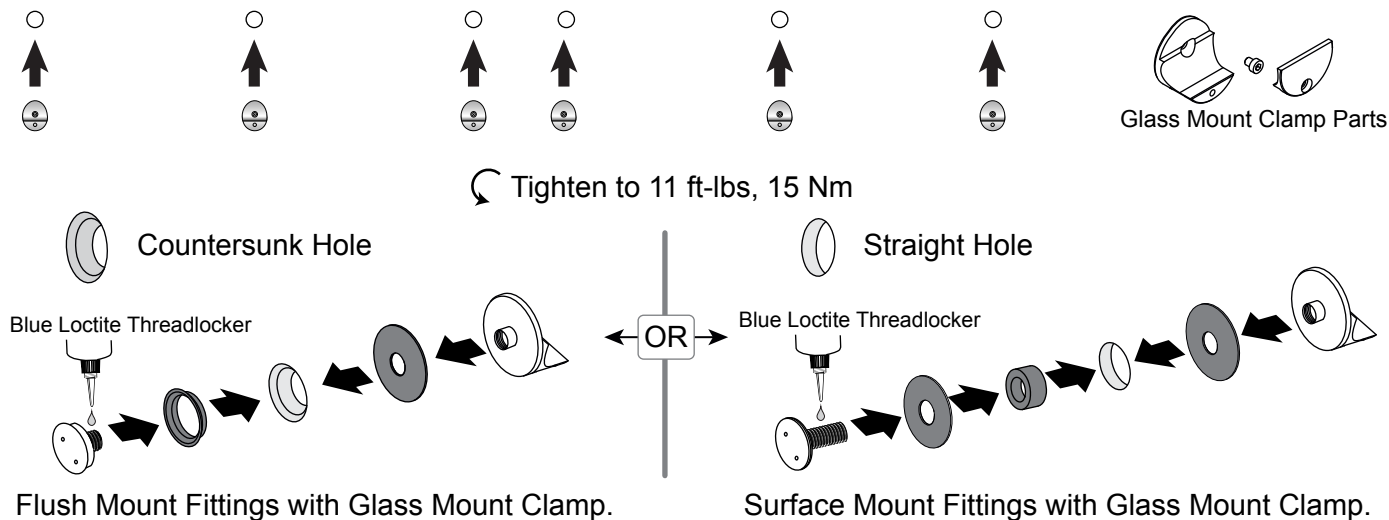
When Tube is level, tighten the Wall Clamps.

* Blue Loctite Threadlocker is recommended on all screw threads during final assembly.

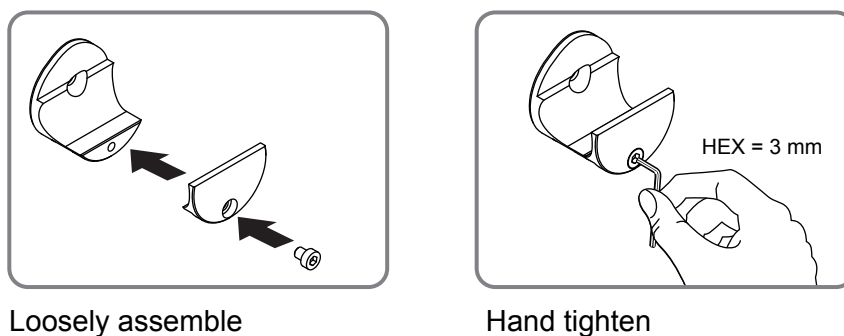
INSTALL HARDWARE: GLASS MOUNT

1. Attach Glass Mount Clamps

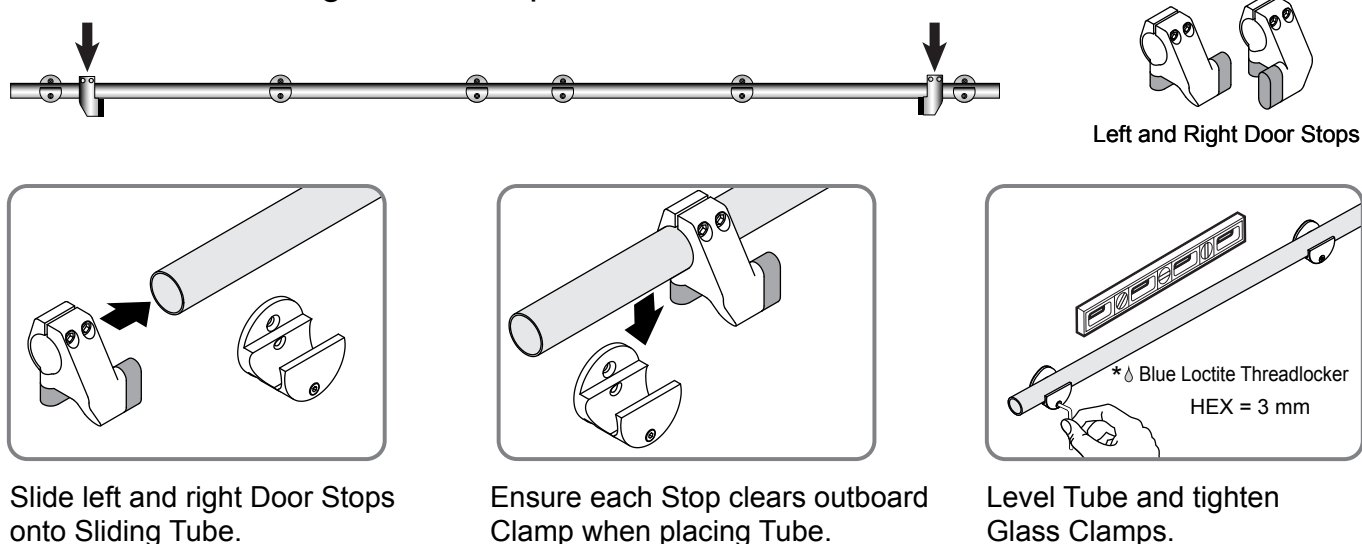
Use either Surface or Flush Mount.



2. Assemble Glass Mount Clamps



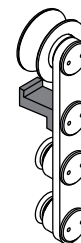
3. Install Left and Right Door Stops



* Blue Loctite Threadlocker is recommended on all screw threads during final assembly.

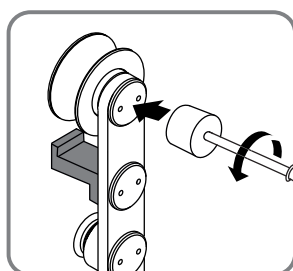
PREPARE DOOR

1. Prepare Top Rollers

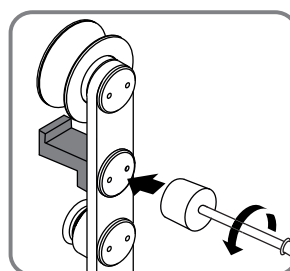
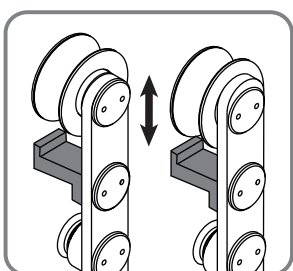


Use spanner head tool to remove Anti-Lift and Door Mount Fittings and loosen Top Roller.

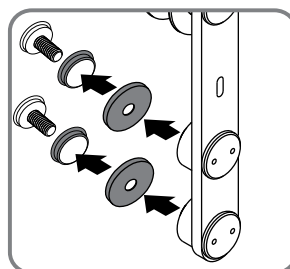
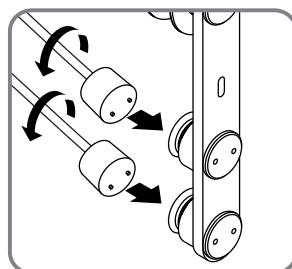
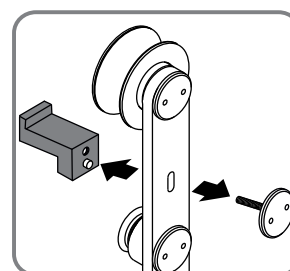
Top Roller



Loosen Top Roller so it easily moves up and down.



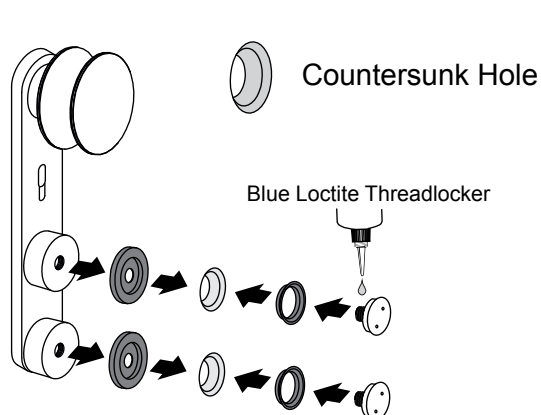
Remove Anti-lift Block and store in a safe place.



Remove Mounting Fittings and store in a safe place.

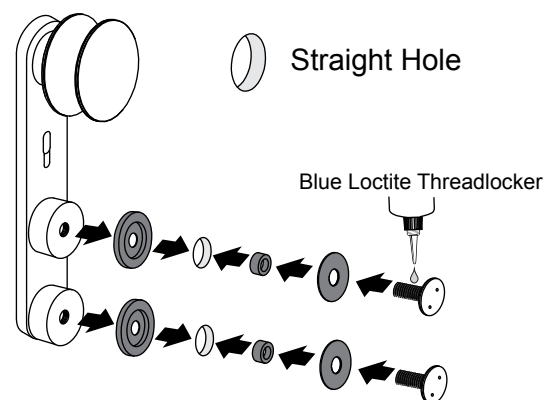
2. Mount Top Rollers Onto Door

⤵ Tighten to 11 ft-lbs, 15 Nm



Flush Mount Fittings with Top Roller

← OR →



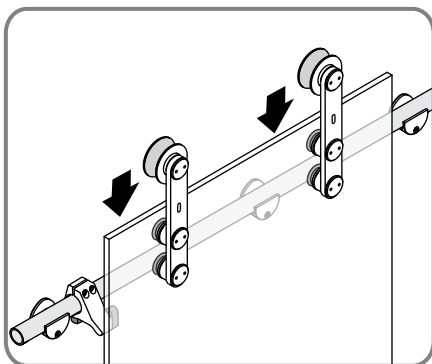
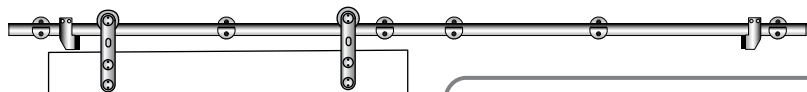
Surface Mount Fittings with Top Roller

NOTE: Mounting posts have minimal adjustment to help with incorrectly located holes in glass.

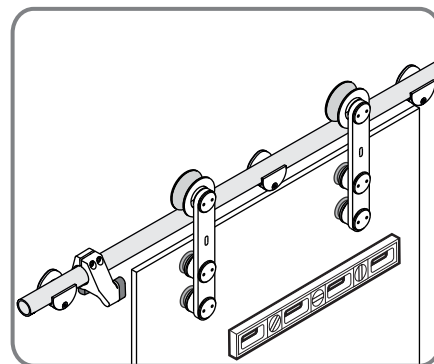
INSTALL DOOR

1. Hang Door

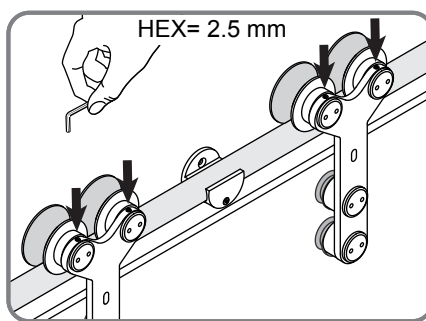
Place Top Rollers onto Sliding Tube. Support weight of door at level and tighten Set Screw at top of Roller.



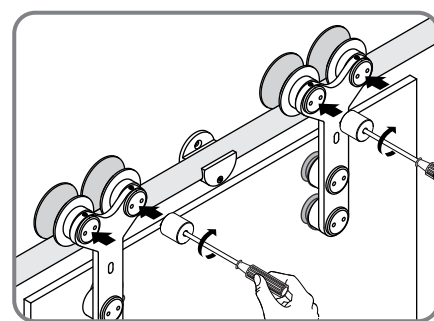
Place Top Rollers onto Tube.



Level and plumb door.



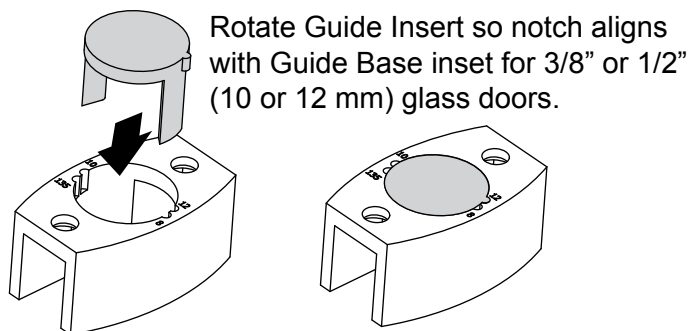
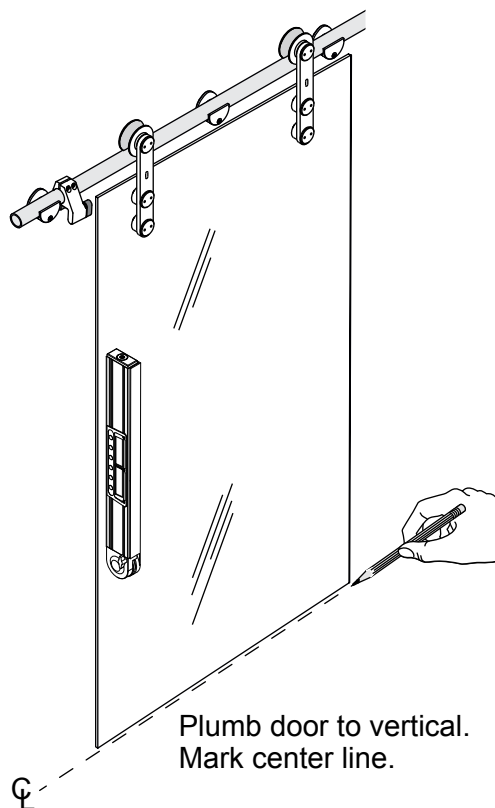
Support door weight and use Set Screw in Top Rollers to adjust height.



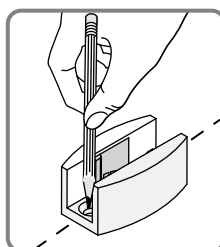
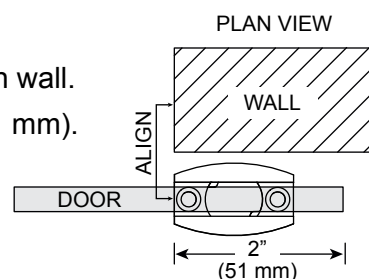
Tighten Top Rollers with Spanner Head Tool.

INSTALL DOOR (CONTINUED)

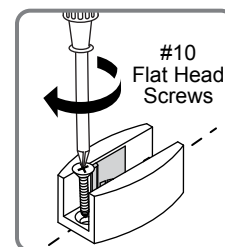
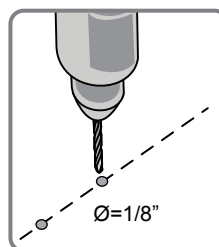
2. Install Floor Guide



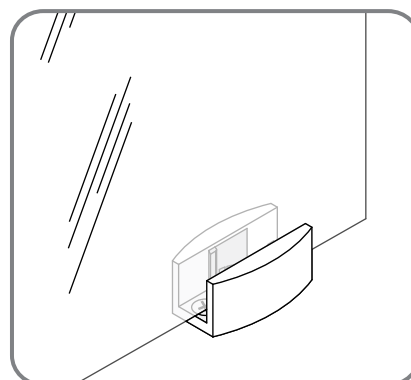
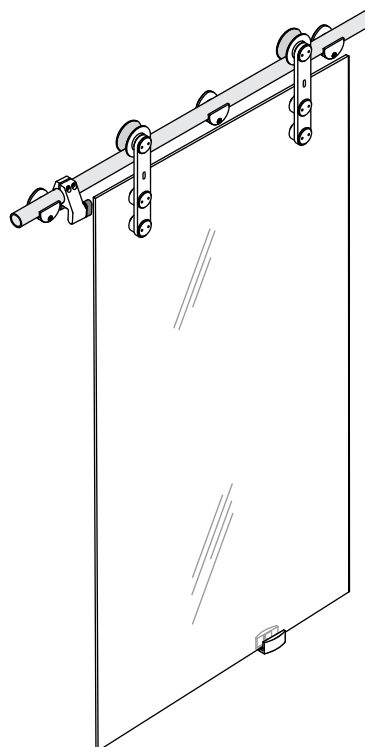
Position Floor Guide to align with wall.
NOTE: Door overlaps wall 2" (51 mm).



Remove door. Mark and drill holes.



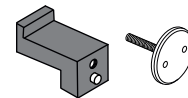
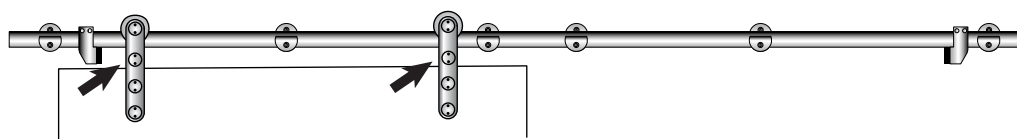
Install with fasteners suitable for substrate.



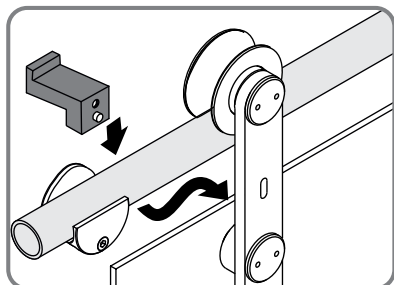
Hang door again making sure it is engaged with the floor guide.

INSTALL DOOR (CONTINUED)

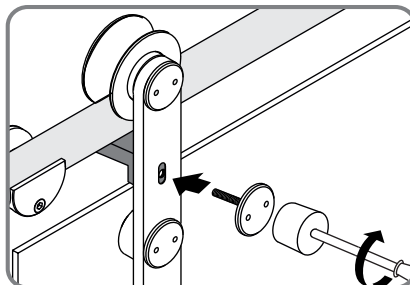
3. Install Anti-Lift Block



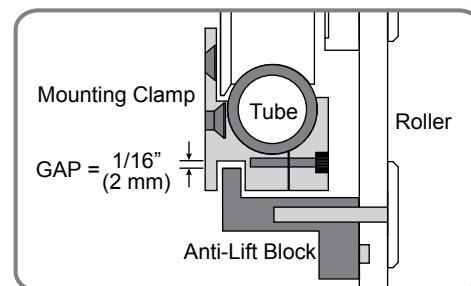
Anti-Lift Block



Fit Anti-Lift Block under Sliding Tube.



Tighten with Spanner Head Tool.



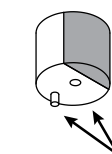
Adjust Anti-Lift Block so Roller moves freely through Mounting Clamps.

4. Install Floor Mount Door Stops

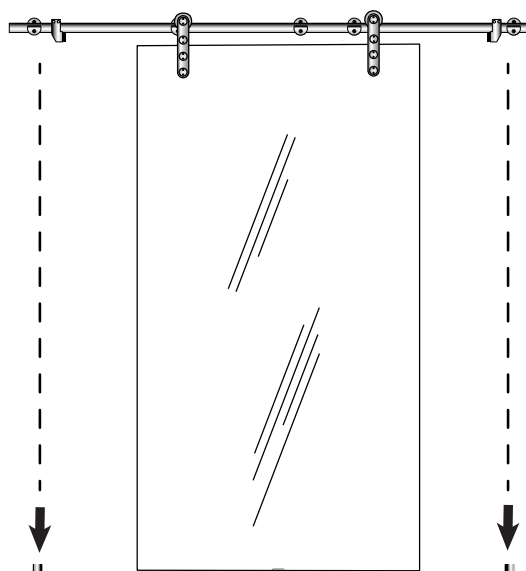
Open door and position Door Stop.

Slide Door Stop so it contacts Top Roller. Tighten top Door Stop Set Screws to secure.

Align Floor Stop to contact door at same position.

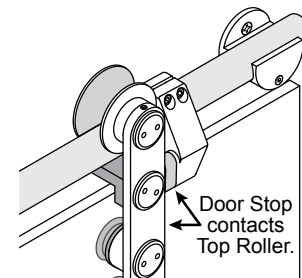


Floor Stop anchored at one end. Drill holes for screw and anchor to install.

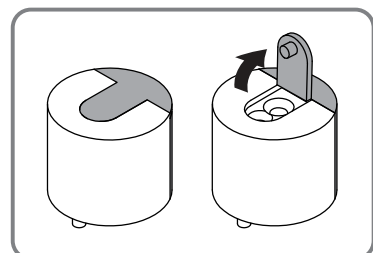


Install Floor Stops below Left and Right Door Stops. Rubber side faces door.

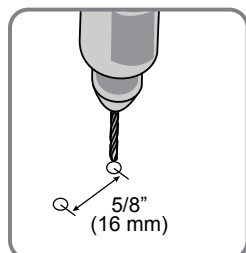
Close door and position and tighten Door Stop.



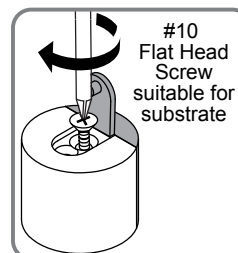
Align Floor Stop to contact door at same position.



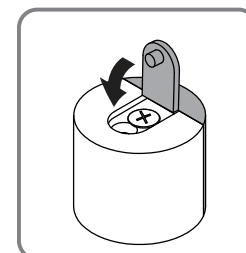
Lift Rubber Cover to mark holes and install.



Drill holes.



Install.

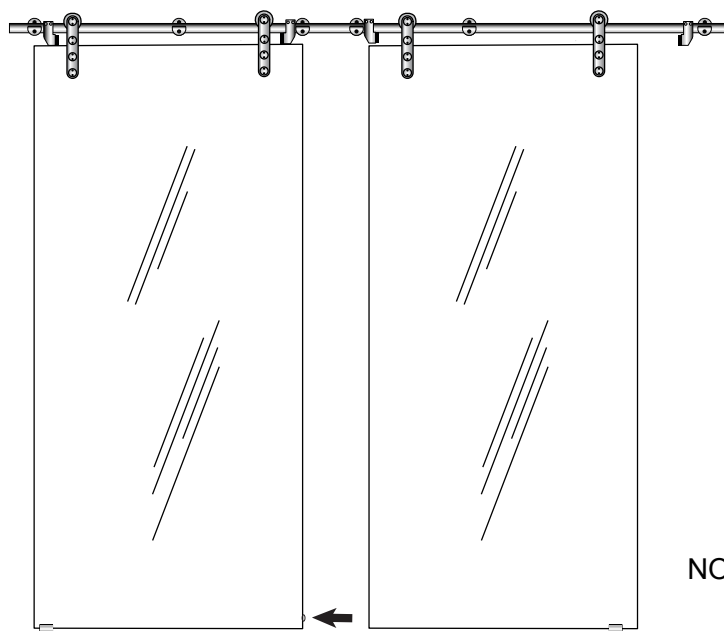


Close Rubber Cover.

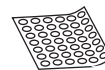
NOTE: The Floor Mount Door Stops may also be mounted to the wall.

INSTALL DOOR (CONTINUED)

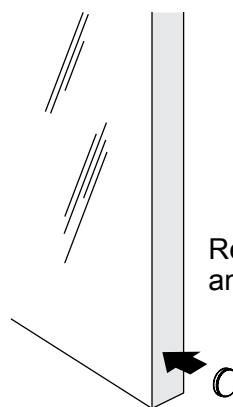
5. Place Glass Edge Protectors



Position one inch from bottom of door.



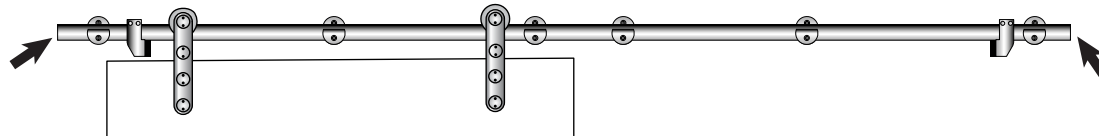
CB1PK Clear Silicone Bumpons



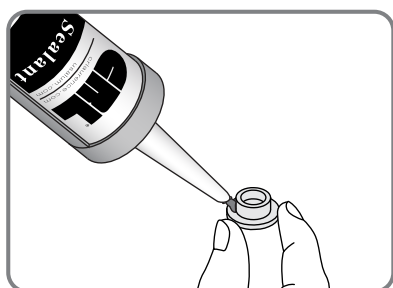
Remove from backing and place on door edge.

NOTE: For use with double doors.

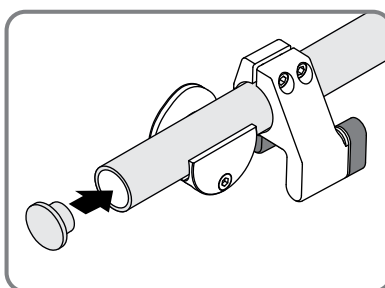
6. Install Sliding Tube End Caps



Sliding Tube End Cap



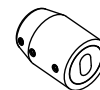
Use a dab of RTV408C silicone to hold cap in place.



Insert into each end of Sliding Tube.

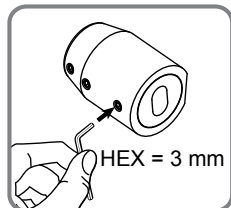
INSTALL ACCESSORIES

Install Wall Mount End Cap (For LSGM5_ Only)

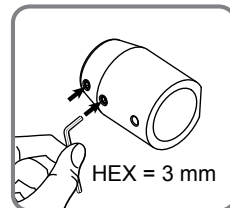
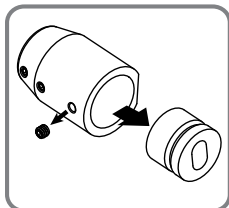


Wall Mount End Cap

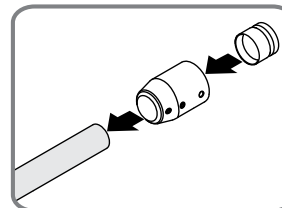
Use when top Sliding Tube terminates into a wall. Use instead of last Mounting Clamp. Mount to wall.



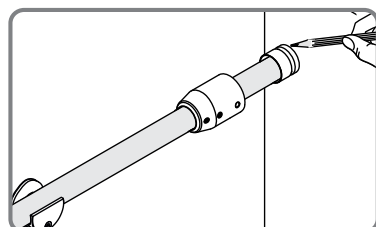
Loosen Set Screw to remove Wall Mount.



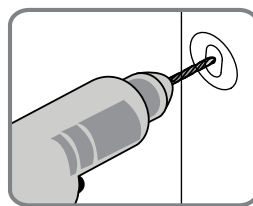
Loosen Set Screws.



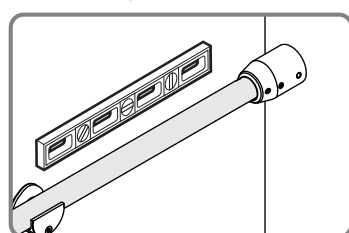
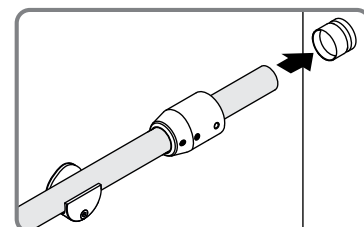
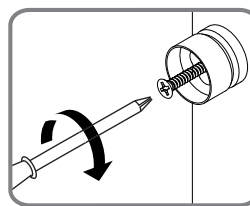
Slide onto Tube.



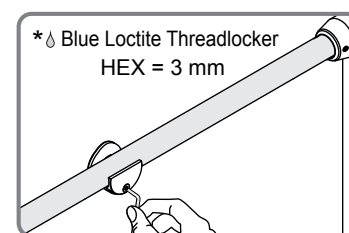
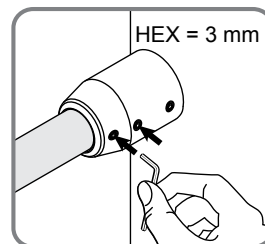
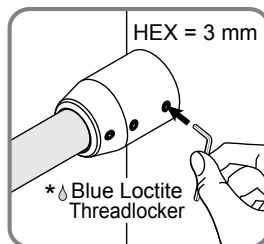
Rest Tube on Glass Clamps to mark position.



Install Wall Mount. Rest Tube on Glass Clamps and fit into Mount.



Ensure Sliding Tube is level. Tighten Set Screws in Wall Mount and Glass Clamps.



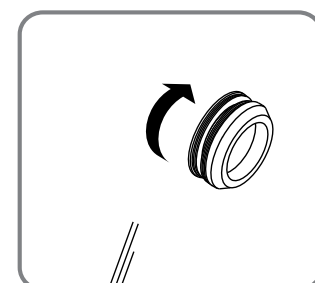
* Blue Loctite Threadlocker is recommended on all screw threads during final assembly.

Install Thru-Glass Pull FP214_ (Optional)

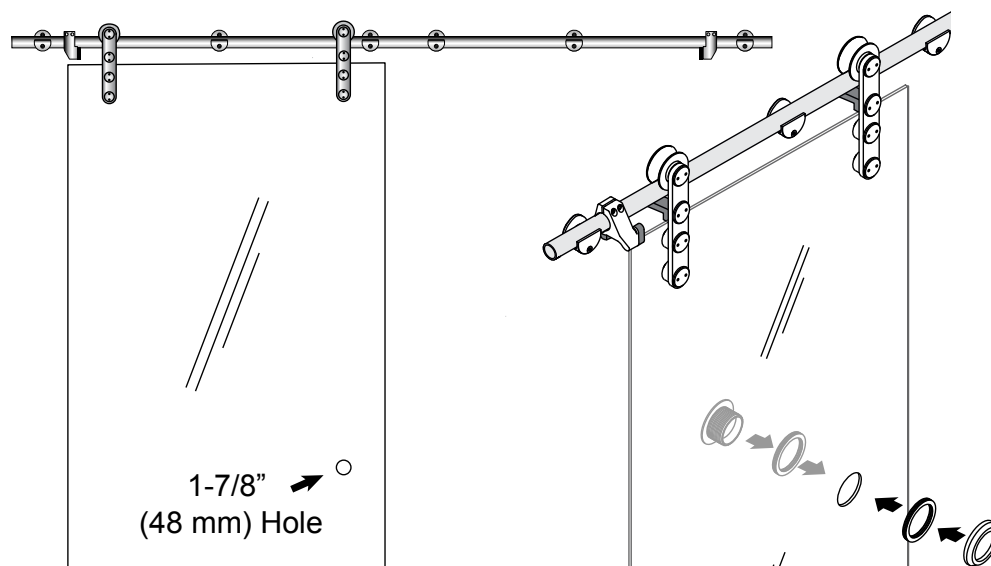
For 3/8" (10 mm) to 1/2" (12 mm) Tempered Glass



Thru-Glass Pull
FP214_



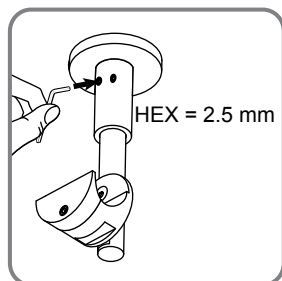
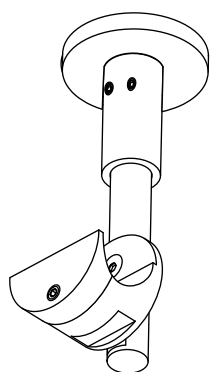
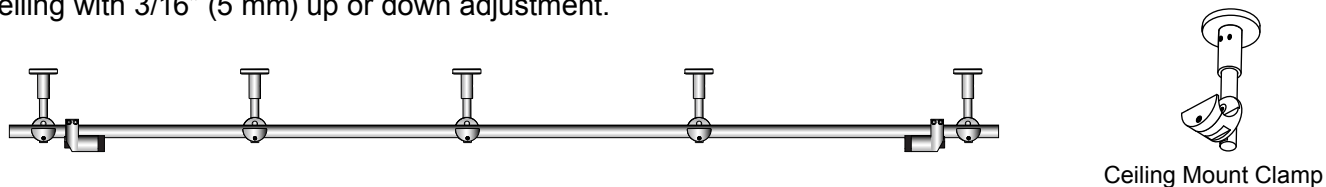
Thread together.



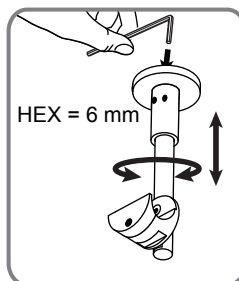
INSTALL ACCESSORIES (CONTINUED)

Install Ceiling Mount Clamp LS412_ (Optional)

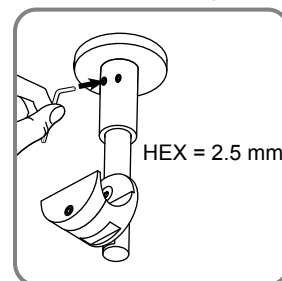
Use to replace wall mount clamps. Attaches to structural ceiling sufficient to support the load of the sliding glass doors up to 220 lbs (100 kg). Position the centerline of the Sliding Tube 4-7/16" (113 mm) down from ceiling with 3/16" (5 mm) up or down adjustment.



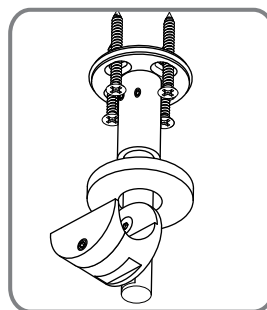
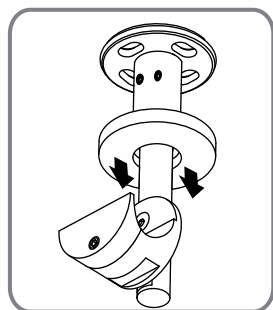
Loosen set screws.



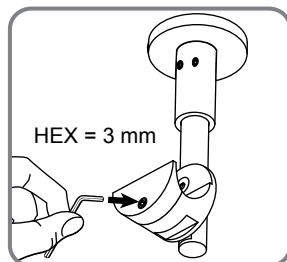
Turn base to raise or lower.



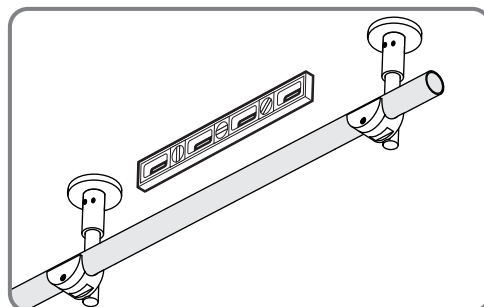
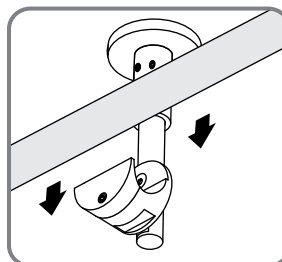
Tighten set screws.



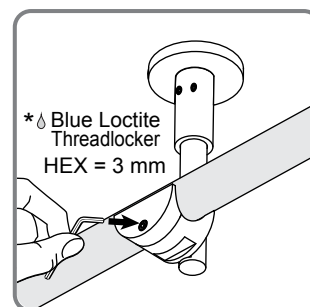
Slide trim plate down. Secure to ceiling with screws properly anchored to the substrate.



Loosen clamp to install sliding tube.



Ensure Sliding Tube is level.



Tighten Clamp again.

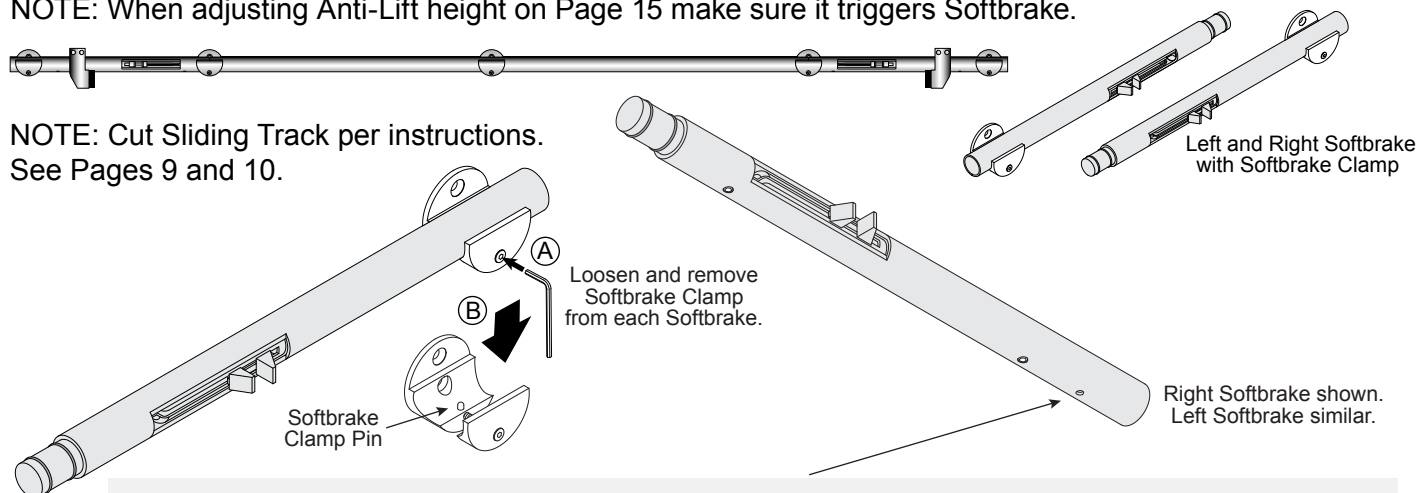
* Blue Loctite Threadlocker is recommended on all screw threads during final assembly.

INSTALL ACCESSORIES (CONTINUED)

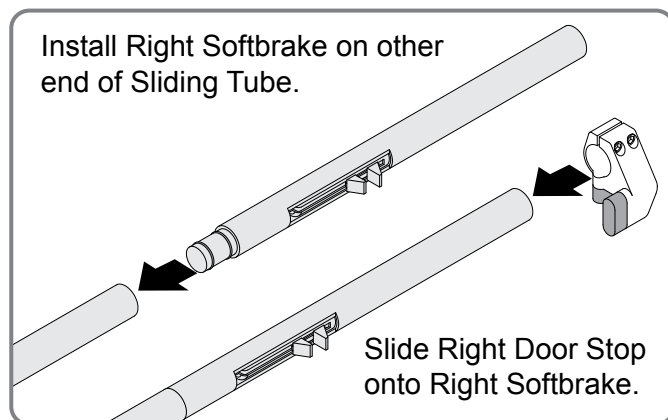
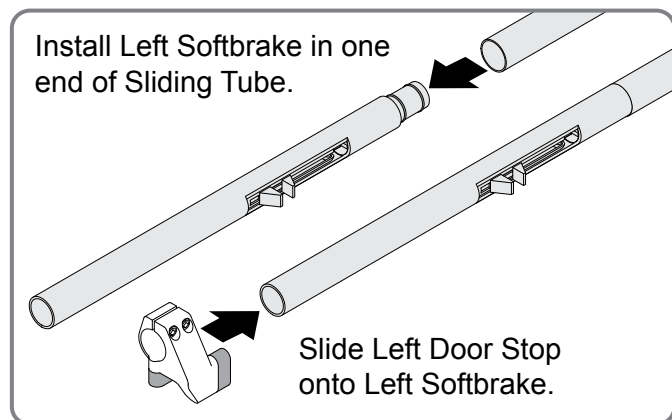
Install Softbrake (Optional for Wall Mount Applications)

Cut Sliding Tube per instructions. Insert Left Softbrake with Left Door Stop into one end and Right Softbrake with Right Door Stop into the other. Follow instructions for Wall Mount Hardware on Pages 11 - 12, centering a Clamp at each joint. Continue on Pages 14 - 17 to finish the installation.

NOTE: When adjusting Anti-Lift height on Page 15 make sure it triggers Softbrake.



NOTE: Softbrake Clamp pin fits in hole in bottom of Softbrake to hold Sliding Tube in position. Install Softbrake Clamps after Wall Clamps are installed to ensure proper location. Follow Steps 1 through 4 on Pages 11 and 12 to install Wall Clamps and Sliding Tube.



NOTE: For Bi-Parting Doors refer to hole location details on Page 10 for Clamp spacing. Butt Left and Right Softbrakes at center of opening. Center Wall Clamps at all other joints.

